



*The Council of European Geodetic Surveyors
Comité de Liaison des Géomètres Européens*

GEOWEB

WEB SERVICES FOR SURVEYORS

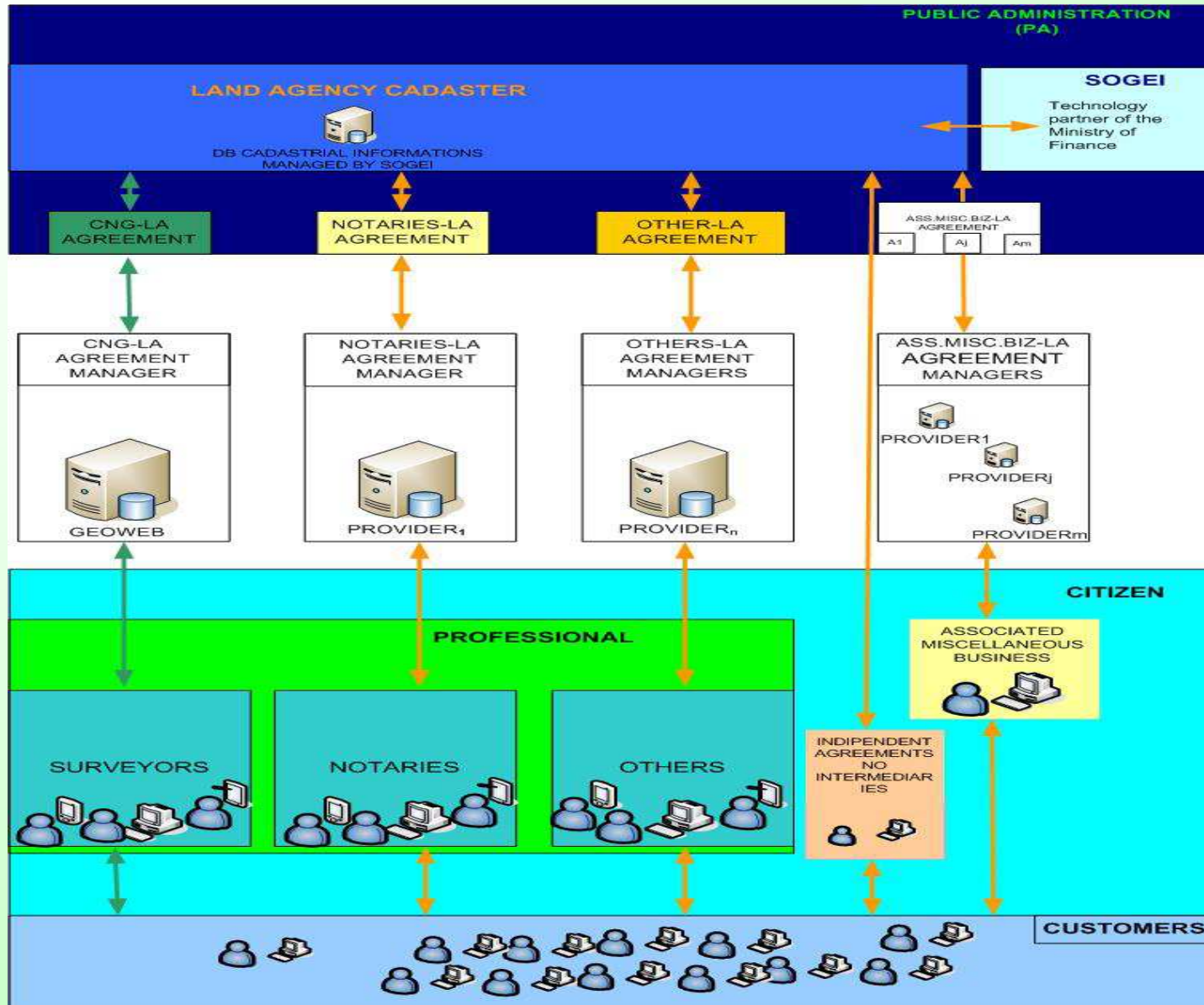
***Hanover, Germany
10 - 14 October 2012***



GEOWEB S.p.A.

Geoweb S.p.A. was established in 1999 thanks to an initiative jointly undertaken by the Consiglio Nazionale Geometri e Geometri Laureati and Sogei S.p.A to develop and disseminate a wide range of WEB services dedicated to the Category of Professional Surveyors

THE ITALIAN SCENARIO




GEOWEB S.p.A.

PRIMARY AIM

TO MEET




ITALIAN SURVEYORS' NEEDS BY ENABLING THEM



TO EASILY ACCESS ALL NECESSARY DATA IN ORDER TO CONDUCT THEIR PROFESSIONAL ACTIVITY AND TO MANAGE DEALINGS WITH THE PUBLIC ADMINISTRATION



TO WORK DIRECTLY FROM THEIR OFFICES



TO WORK AT ANY TIME (24/7)



GEOWEB S.p.A.

WHAT DOES GEOWEB OFFER...

The portal

www.geoweb.it

has been developed to allow Geoweb's users to access the main services of the Land Agency Cadaster, as well as other Bodies and Institutions

GEOWEB S.p.A.

...WHAT DOES GEOWEB OFFER



possibility to submit online updating proposals to the urban and rural cadastre databases (**DOCFA and PREGEO**)



possibility to download land mapsheets for updating purposes (**EDM**) and to overlay the mapsheet on its corresponding aerial photo (**Geo-Sit**)



ongoing training initiatives (**Geo-Learning**)



GEOWEB S.p.A.

MAIN SERVICES...

- **CADASTRAL SURVEYS**
- **MORTGAGE REGISTRY RECORD CONSULTATION**
- **ON LINE DOCFA AND PREGEO SUBMISSION**
- **DOWNLOADING OF LAND MAPSHEETS FOR UPDATING (EDM)**
- **URBAN CADASTRAL TITLE PLANS**
- **PLANS OF BUILDING BLOCKS**



GEOWEB S.p.A.

...MAIN SERVICES...

- **GEO-LEARNING**
- **GEO-SIT – *OVERLAYING OF MAPSHEETS ON THE AERIAL PHOTOS***
- **CHAMBER OF COMMERCE'S SURVEYS**
- **P.R.A – *PUBLIC MOTOR REGISTRY CONSULTATIONS***
- **S.E.I – *DATABASE OF NATIONWIDE TENDERS AND AWARDS***
- **D.E.I – *BUILDING MATERIALS PRICE LIST AND TECHNO LEGISLATIVE ENCYCLOPEDIA***



GEOWEB S.p.A.


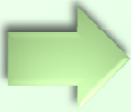


...MAIN SERVICES

- **GEOREFERENCING A SURVEYOR WITHIN THE ITALIAN TERRITORY**
- **DAILY NEWSPAPER REVIEW**
- **CONNECTION WITH THE REVENUE AGENCY'S ONLINE FILING SERVICE TO SEND INCOME TAX RETURNS**
- **TEXT MESSAGING SERVICES**

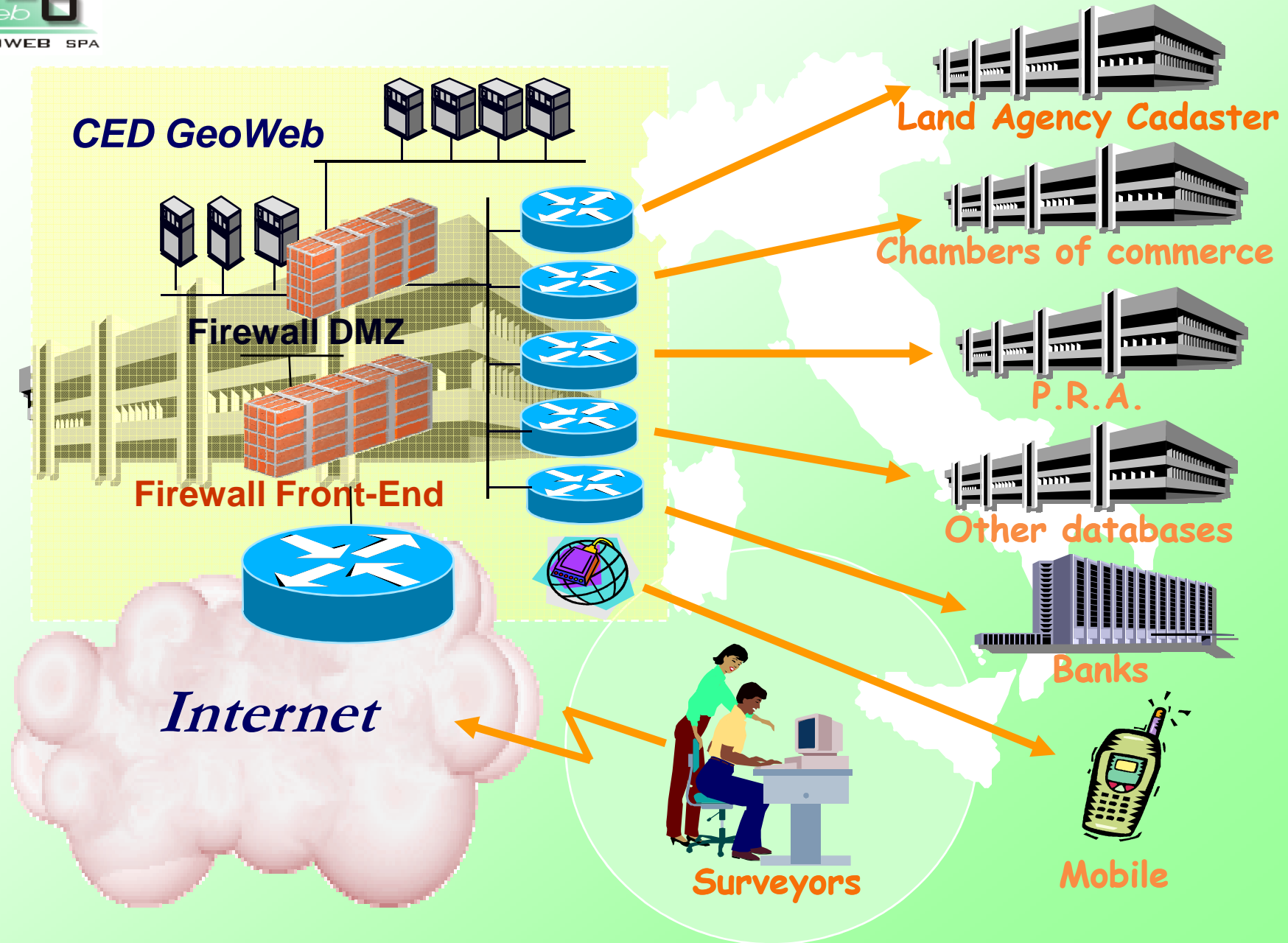
GEOWEB S.p.A

THE BENEFITS

THE LAND AGENCY CADASTER REACHES THE SURVEYOR'S OFFICE VIRTUALLY AND MAKES IT POSSIBLE TO:

-  **ELIMINATE** { **the time required to arrive at the P.A.'s offices**
queuing at the P.A. counters
-  **MAKE THE SERVICES AVAILABLE 24/7 (instant survey)**
-  **COMUNICATE WITH THE PUBLIC ADMINISTRATION IN A TIMELY WAY**
-  **CONTAIN THE LAND AGENCY CADASTER'S EMPLOYEES' WORKLOAD**

GEOWEB'S NETWORK



GEOWEB MAKES IT POSSIBLE TO:

- **share professional knowledge and experience**
- **comunicate in a timely way**
- **point out professional issues in a fast and reliable way**
- **identify and solve common specific problems**
- **enhance the surveyor's role within the P.A.**

10 YEARS LATER

- **MORE THAN 25.000 USERS**
- **MORE THAN 150.000 TRANSACTIONS EACH DAY
(*ABOUT 5.000.000 TRANSACTIONS EACH MONTH*)**
- **MORE THAN 50 MILLION TRANSACTIONS EACH
YEAR**
- **CONSTANT DEVELOPMENT AND UPGRADING
OF THE SERVICES PROVIDED**

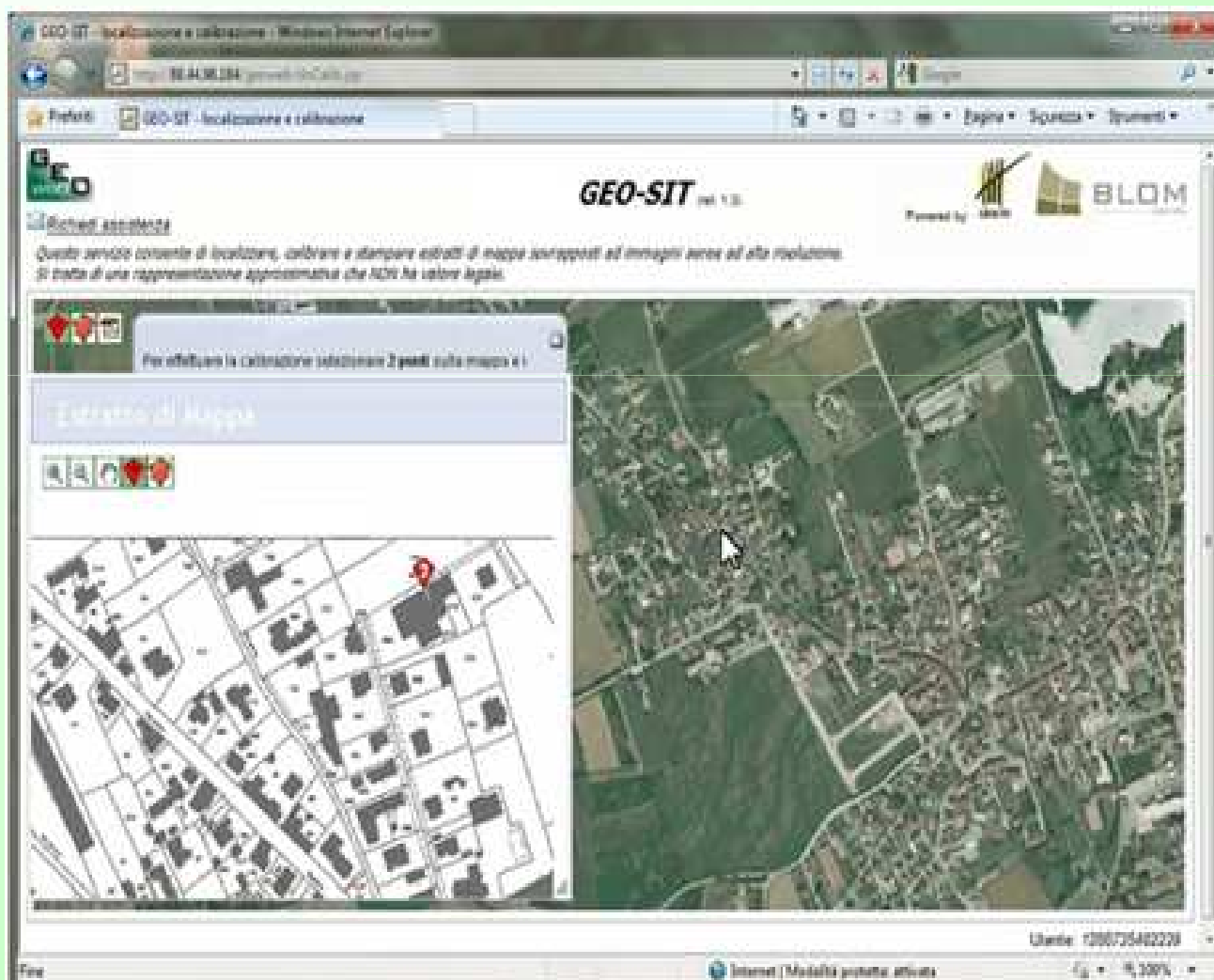
GEO – SIT

... some examples

- **This service allows the Surveyor to locate, calibrate and print the land mapsheed overlapped with high resolution aerial photos.**



GEO – SIT *... an example*



OVERLAYING OF MAPSHEETS ON THE AERIAL PHOTOS

(Geo-SIT)



Description

- WEB SERVICE ENGINE:**
- Readings of the Optical Character Recognitio
 - Trasformation algorithm from Cassini / Soldner or Gauss / Boaga to WGS84.
 - Numerical solutions for the calculation of extreme geodesic coordinates



GEO-SIT: TO UNVEIL UNDECLARED BUILDINGS (GHOST – BUILDINGS)!



PROSPECTIVES

- **ONLINE TRANSMISSION TO MUNICIPALITIES OF THE BUILDING DOCUMENTATION**
- **ALTERNATIVE STORAGE- ELECTRONIC STORAGE OF DOCUMENTS**
- **TAX SERVICES**

GEOWEB AND THE LAND AGENCY CADASTER

Strategies...

- **HELPS THE PUBLIC ADMINISTRATION TO DESIGN SOLUTIONS**
- **DISTANCE REDUCER BETWEEN THE PROFESSIONAL CATEGORY AND THE INSTITUTION USING PROPOSALS COMPATIBLE WITH THE AIMS OF THE LAND AGENCY AND THE REQUESTS OF THE PROFESSIONAL CATEGORY**

GEOWEB AND THE LAND AGENCY CADASTER

...Strategies

- **RECEIVES FEEDBACK FROM ITS USERS**
- **MONITORS POINTS OF CONTACT WITH THE LAND OF AGENCY TO GIVE PRIORITY TO THE MOST RELEVANT ISSUES TO ESTABLISH COLLABORATIVE RELATIONSHIPS WITH THE PUBLIC ADMINISTRATION**

GEOWEB

THANK YOU
FOR YOUR KIND ATTENTION